



Low birth weight

Babies born in 2016 with a low birth weight (<2500g)

BFBC:	● 21 babies (1.6%)
RBWM:	● 44 babies (2.8%)
SBC:	● 79 babies (3.4%)



Breastfeeding initiation

% mothers who breastfed their baby in first 48 hours after delivery in 2016/17

BFBC:	● 76.6%
RBWM:	● 83.0%
SBC:	● 76.2%



Health Visiting New Birth Visits

% of births that receive a face to face NBV within 14 days (2017/18 Q1-Q3)

BFBC:	● 1,023 NBVs (95.6%)
RBWM:	● 988 NBVs (78.4%)
SBC:	● 1,778 NBVs (95.3%)



Breastfeeding prevalence

% of all infants due a 6-8 week check that are totally or partially breastfed in 2016/17

BFBC:	● 51.2%
RBWM:	● Value unknown
SBC:	● 62.1%

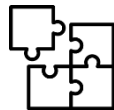


Flu vaccine (2 and 3 year olds)

% of children who received the flu vaccine from Sep-17 to Jan-18

	Aged 2	Aged 3
B&A	● 47%	● 52%
WAM:	● 44%	● 46%
Slough:	● 26%	● 28%

Compared against national target of 60%



Child development at 2 - 2 ½ years

% of children who received a review and who were at or above expected level in all 5 areas of development (2017/18 Q3)

BFBC:	● 313 children (91.8%)
RBWM:	● 201 children (82.0%)
SBC:	● Value unknown



MMR – 1st dose

% of children who received one dose of MMR vaccine by 2nd birthday (2016/17)

BFBC:	● 90.6%
RBWM:	● 88.5%
SBC:	● 84.8%

Compared against national target of 95%



Infant mortality

Rate of deaths in infants aged under 1 year per 1,000 live births (2014-16)

BFBC:	● 7 infants (1.6)
RBWM:	● 19 infants (3.8)
SBC:	● 33 infants (4.2)



MMR – 2nd dose

% of children who received one dose of MMR vaccine by 5th birthday (2016/17)

BFBC:	● 90.7%
RBWM:	● 82.8%
SBC:	● 79.0%

Compared against national target of 95%



A&E attendances (0-4 years)

Rate of attendances in children per 1,000 population (2016/17)

BFBC:	● 5,618 children (724.6)
RBWM:	● 3,668 children (409.6)
SBC:	● 7,073 children (535.3)



Hospital Admissions for injuries

Rate of admissions caused by unintentional and deliberate injuries in under 5s per 10,000 population (2016/17)

BFBC:	● 74 admissions (95.4)
RBWM:	● 82 admissions (92.6)
SBC:	● 152 admissions (115.0)

The latest available data is shown at a local authority or CCG level, dependent on the data type

This is compared against the England figure:

- Significantly better than England
- No significant difference to England
- Significantly worse than England
- Not comparable/ Value unknown

Where a national target has been set, data has been compared against this target.



School Readiness

% of children achieving a good level of development at end of Year R (2016/17)

	All	Free School Meals
BFBC:	73.4%	57.6%
RBWM:	76.6%	51.6%
SBC:	71.2%	59.9%



Tooth Decay

% of 5 year olds free from tooth decay (2014/15)

BFBC:	77.9%
RBWM:	81.5%
SBC:	58.7%



Obesity and overweight (Year R)

% of children in Year R who are obese and overweight (2016/17)

	Obese	Overweight
BFBC:	7.1%	19.2%
RBWM:	6.6%	17.1%
SBC:	10.4%	21.1%



Obesity and overweight (Year 6)

% of children in Year 6 who are obese and overweight (2016/17)

	Obese	Overweight
BFBC:	15.8%	30.0%
RBWM:	16.2%	30.5%
SBC:	26.0%	41.5%



Pupils with social, emotional and mental health needs

% of pupils identified as having social, emotional & mental health needs (2017)

BFBC:	312 children (1.75%)
RBWM:	536 children (2.51%)
SBC:	638 children (2.15%)



Uptake of free school meals

% of pupils eligible for and claiming free school meals who attend state funded school (2017)

BFBC:	1,357 children (7.6%)
RBWM:	1,356 children (6.3%)
SBC:	2,979 children (9.8%)



Hospital Admissions for injuries

Rate of admissions caused by unintentional and deliberate injuries in 0-14s per 10,000 population (2016/17)

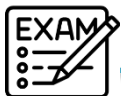
BFBC:	489 admissions (82.2)
RBWM:	214 admissions (75.9)
SBC:	341 admissions (94.7)



HPV vaccination uptake – 1st dose

% of 12-13 year old girls who received first dose of HPV vaccine (2016/17)

BFBC:	95.5%	Compared against national target of 90%
RBWM:	93.8%	
SBC:	88.9%	



Key Stage 4: GCSEs & equivalent results

Average Attainment 8 score for pupils in 2016/17

	All	Free School Meals	SEN support
BFBC:	51.4	42.4 (62 pupils)	39.0 (98 pupils)
RBWM:	53.1	45.9 (95 pupils)	41.5 (178 pupils)
SBC:	54.9	45.4 (147 pupils)	43.1 (206 pupils)

The latest available data is shown at a local authority or CCG level, dependent on the data type

This is compared against the England figure:

- Significantly better than England
- No significant difference to England
- Significantly worse than England
- Not comparable/ Value unknown

Where a national target has been set, data has been compared against this target.

Children and Young People's Outcomes in East Berkshire

Health behaviours for 15 year olds (June 18)

Health behaviours for 15 year olds have been estimated based on the responses provided in the What About YOUth (WAY 2014) survey



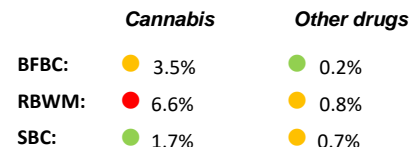
Smoking prevalence (current smokers)



Regular drinker of alcohol (every week)



Drug Use (in the last month)



% who think they're the right size



Sedentary for 7 hours or more per day



Physically Active (at least 1 hour every day in last week)



Eat 5 portion of fruit & veg a day (yesterday)



Mental Wellbeing: Mean WEBWBS score



Reporting low life satisfaction



Reported that they were bullied (in past 2 months)

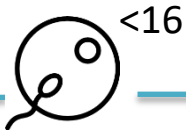


The latest available data is shown at a local authority or CCG level, dependent on the data type

This is compared against the England figure:

- Significantly better than England
- No significant difference to England
- Significantly worse than England
- Not comparable/ Value unknown

Where a national target has been set, data has been compared against this target.



Under 16s conception rate

Rate of conceptions for females aged 13-15 per 1,000 population (2016/17)

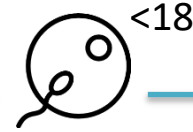
BFBC: ● Value not published
RBWM: ● Value not published
SBC: ● 8 conceptions (3.0)



NEET (16-17 year olds)

% of 16-17 year olds who are NEET or whose activity is not known (2016)

BFBC: ● 120 young people (5.2%)
RBWM: ● 1,140 young people (44.8%)
SBC: ● 130 young people (3.7%)



Under 18s conception rate

Rate of conceptions for females aged 15-17 per 1,000 population (2016/17)

BFBC: ● 19 conceptions (8.3)
RBWM: ● 23 conceptions (8.5)
SBC: ● 32 conceptions (12.2)



First time entrants to Youth Justice System (10-17 year olds)

Rate per 100,000 population (2016)

BFBC: ● 27 young people (227.4)
RBWM: ● 29 young people (191.7)
SBC: ● 55 young people (366.4)



Admissions due to substance misuse (15 to 24 year olds)

Rate of admissions as a result of self-harm per 100,000 population (2014/15-16/17)

BFBC: ● 23 admissions (57.1)
RBWM: ● 40 admissions (97.9)
SBC: ● 26 admissions (53.3)



Admissions as a result of self-harm (10 to 24 year olds)

Rate of admissions as a result of self-harm per 100,000 population (2016/17)

BFBC: ● 107 admissions (508.0)
RBWM: ● 84 admissions (379.1)
SBC: ● 75 admissions (298.7)



Admissions for mental health conditions (under 18s)

Rate of admissions for mental health disorders per 100,000 population (2016/17)

BFBC: ● 25 admissions (88.7)
RBWM: ● 18 admissions (52.7)
SBC: ● 11 admissions (26.6)



Admissions for alcohol-specific conditions (under 18s)

Rate of admissions for alcohol-specific concerns per 100,000 population (2014/15-16/17)

BFBC: ● 17 admissions (20.2)
RBWM: ● 17 admissions (16.8)
SBC: ● 20 admissions (16.4)



Hospital Admissions for injuries (15 to 24 year olds)

Rate of admissions caused by unintentional and deliberate injuries per 10,000 population (2016/17)

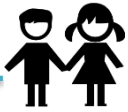
BFBC: ● 238 admissions (177.0)
RBWM: ● 177 admissions (118.8)
SBC: ● 237 admissions (144.4)

The latest available data is shown at a local authority or CCG level, dependent on the data type

This is compared against the England figure:

- Significantly better than England
- No significant difference to England
- Significantly worse than England
- Not comparable/ Value unknown

Where a national target has been set, data has been compared against this target.



Children in Care (under 18)

Children looked after per 10,000 population at 31st March 2017

BFBC:	● 115 children (41)
RBWM:	● 110 children (32)
SBC:	● 190 children (46)



Child Protection cases (under 18)

Rate of children who become subject of child protection plan during year per 10,000 population (2014/15)

BFBC:	● 144 children (51.8)
RBWM:	● 89 children (26.6)
SBC:	● 173 children (43.4)



LAC: emotional and behavioural health (5 to 16 year olds)

Average SDQ difficulties score for LAC on 31st March 2017

BFBC:	● 15.0	SDQ score of 14 is considered normal; 17 and over is cause for concern
RBWM:	● 14.5	
SBC:	● 14.9	



LAC: emotional and behavioural health – cause for concern (5 to 16 year olds)

% of LAC with SDQ score of 17 or above on 31st March 2017

BFBC:	● Value not published
RBWM:	● Value not published
SBC:	● 15 children (41.7%)



Hospital admissions for epilepsy (under 19s)

Rate of emergency admissions for epilepsy per 100,000 population (2015/16)

BFBC:	● 12 admissions (40.5)
RBWM:	● 22 admissions (62.1)
SBC:	● 47 admissions (110.9)



Hospital admissions for asthma (under 19s)

Rate of emergency admissions for asthma per 100,000 population (2016/17)

BFBC:	● 29 admissions (97.5)
RBWM:	● 33 admissions (91.5)
SBC:	● 117 admissions (271.2)



Pupils with social, emotional and mental health needs

% of pupils identified as having social, emotional & mental health needs (2017)

BFBC:	● 312 children (1.75%)
RBWM:	● 536 children (2.51%)
SBC:	● 638 children (2.15%)



Uptake of free school meals

% of pupils eligible for and claiming free school meals who attend state funded school (2017)

BFBC:	● 1,357 children (7.6%)
RBWM:	● 1,356 children (6.3%)
SBC:	● 2,979 children (9.8%)



Hospital admissions for diabetes (under 19s)

Rate of emergency admissions for diabetes per 100,000 population (2015/16)

BFBC:	● 17 admissions (57.4)
RBWM:	● 13 admissions (36.7)
SBC:	● 28 admissions (66.1)



Homeless young people (16 to 24 year olds)

Homeless households headed by applicant aged 16-24 per 1,000 total households (2016/17)

BFBC:	● 13 households (0.26)
RBWM:	● 11 households (0.18)
SBC:	● 28 households (0.51)



Child Mortality (1 to 17 year olds)

Rate of deaths for children aged 1 to 17 (2014-16)

BFBC:	● 4 deaths (Value unknown)
RBWM:	● 7 deaths (Value unknown)
SBC:	● 21 deaths (18.5)

The latest available data is shown at a local authority or CCG level, dependent on the data type

This is compared against the England figure:

- Significantly better than England
- No significant difference to England
- Significantly worse than England
- Not comparable/ Value unknown

Where a national target has been set, data has been compared against this target.